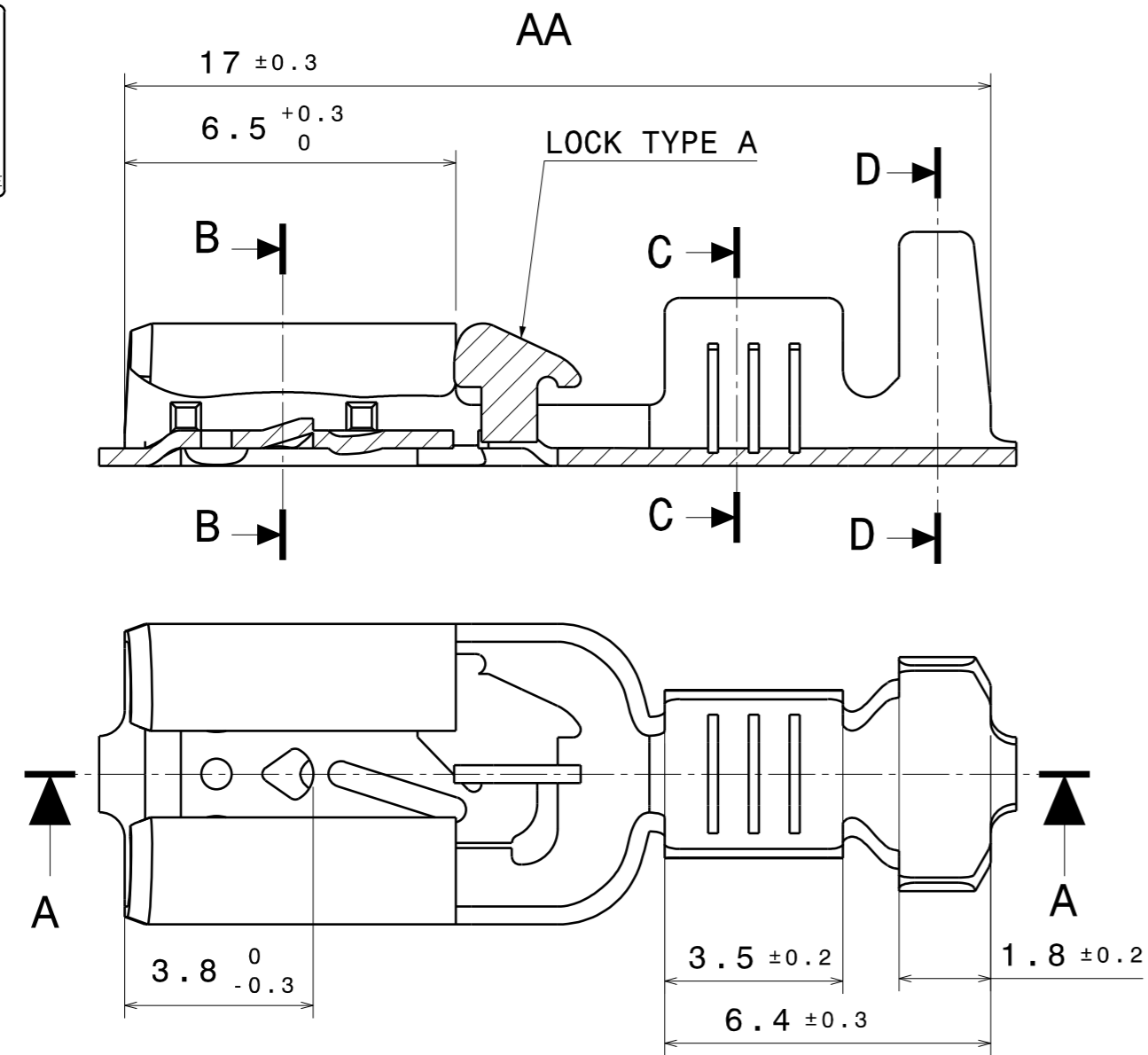
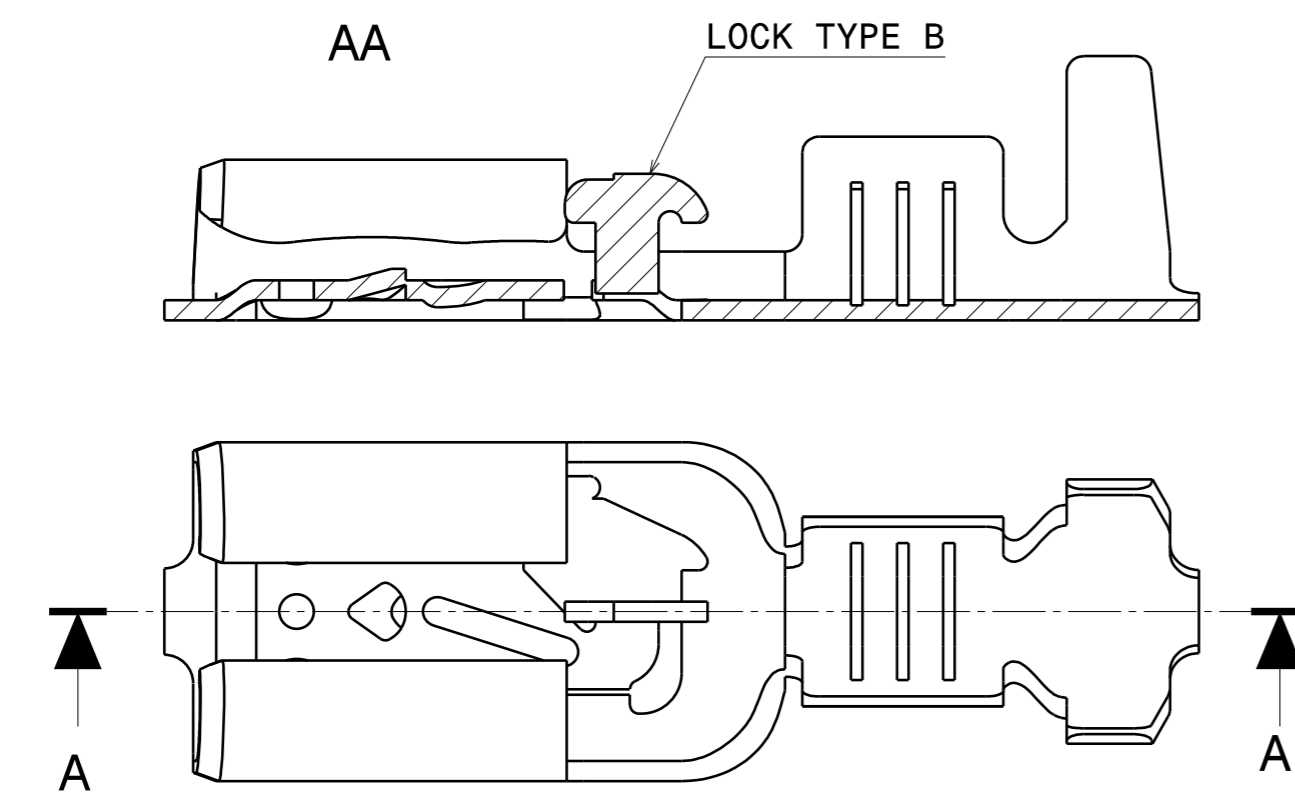


CONCEPTION ASSISTEE
PAR ORDINATEUR
CATIA
Version 5
CE PLAN NE DOIT SUBIR
AUCUNE MODIFICATION MANUELLE

TYPE A

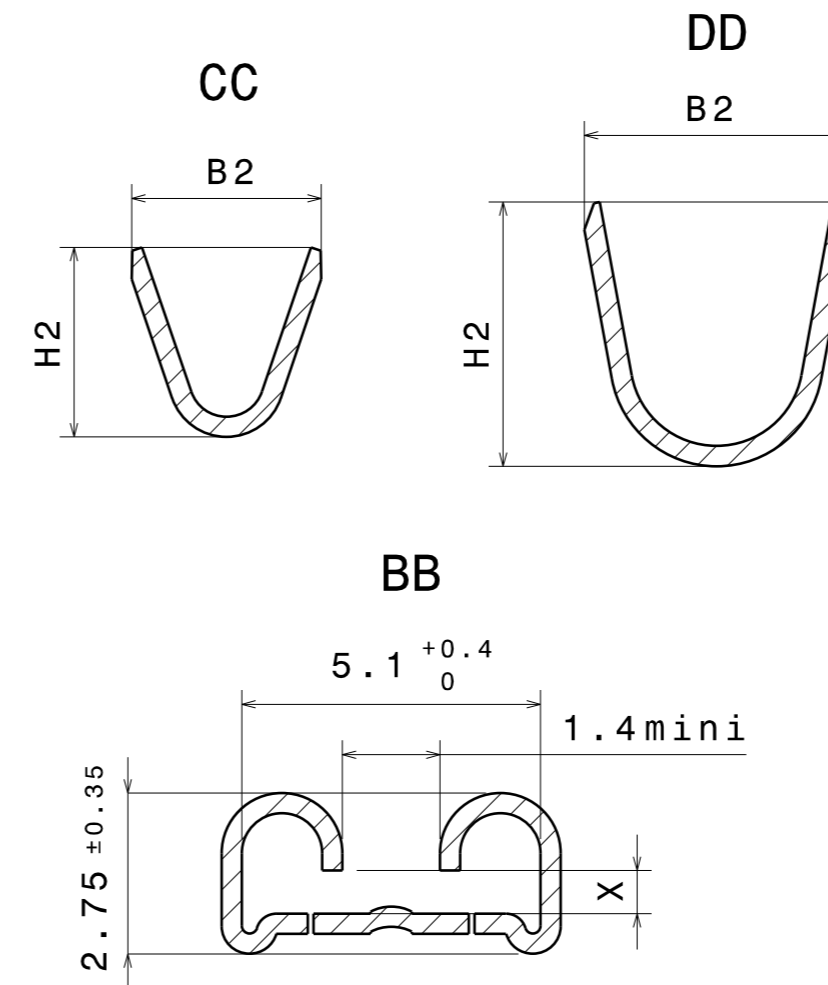


TYPE B



SAME COTATION AS TYPE A

REFERENCE	MAT/TREAT	LANGUETTE TAB	TYPE	SECTION	B1±0.3	B2±0.3	H1±0.3	H2±0.3	X
22176	123 324	4.8x0.3	A	0.75/1.5 mm ²	3.3	4.6	3.3	4.6	0.15 ± 0.05
22177	123 324	4.8x0.3	A	0.3/0.6 mm ²	2.2	3.5	2.5	3.4	0.15 ± 0.05
22154	123 324	4.8x0.5	A	0.75/1.5 mm ²	3.3	4.6	3.3	4.6	0.40 ± 0.05
22153	123 009			0.3/0.6 mm ²	2.2	3.5	2.5	3.4	0.35 ± 0.05
22152	123 009			0.3/0.6 mm ²	2.2	3.5	2.5	3.4	0.40 ± 0.05
22151	123 324			0.3/0.6 mm ²	2.2	3.5	2.5	3.4	0.40 ± 0.05
22018	123 211	4.8x0.8	A	0.75/1.5 mm ²	3.3	4.6	3.3	4.6	0.65 ± 0.05
	123 324			0.3/0.6 mm ²	2.2	3.5	2.5	3.4	0.50 ± 0.05
22019	123 009			0.3/0.6 mm ²	2.2	3.5	2.5	3.4	0.65 ± 0.05
22022	123 009	4.8x0.8	B	1.5/2.5 mm ²	4.1	5.3	3.8	5.3	0.60 ± 0.05
22023	123 324			0.75/1.5 mm ²	3.3	4.6	3.2	4.6	0.65 ± 0.05
26289	123 211			0.75/1.5 mm ²	3.3	4.6	3.2	4.6	0.65 ± 0.05
26553	201 011	4.8x0.8	B	0.75/1.5 mm ²	3.3	4.6	3.2	4.6	0.65 ± 0.05
	123 011								
	201 322								



BURRS ACCORDING TO :	NF E81-010 class B
THICKNESS :	0.35 mm
PITCH :	19 mm

**CONDITIONNEMENT
PACKAGING**

BOBINE PL105
CONDITIONNEMENT :
7500 PIECES PAR BOBINE

SENS DE DEROULEMENT
FEEDING DIRECTION

PL105 REEL WITH
PACKAGING
7500 PARTS PER REEL

- (M) : COTE POUVANT ETRE MODIFIEE - DIMENSION COULD BE MODIFIED
- (Δ) : CARACTERISTIQUES FONCTIONNELLES - FUNCTIONAL CHARACTERISTIC
- (Ind) : INDICE DE MODIFICATION - MODIFIED ITEM
- < > : NON CONFORMITE ACCEPTABLE. LA COTE D'ORIGINE EST SEULE VALABLE EN CAS DE RECLAMATION, DE REPARATION OU DE CONSTRUCTION D'OUTILLAGE. ACCEPTABLE NONCONFORMITY. ONLY THE ORIGINAL DIMENSION IS VALID IN CASE OF TOOL CONSTRUCTION, REPAIRING OR QUALITY COMPLAINT.
- Cm Cmk : COTES SOUMISES A CAPABILITE INITIALE - INITIAL CAPABILITY
- Cp Cpk : COTES SOUMISES A CAPABILITE EN PRODUCTION - PRODUCT CAPABILITY
- SPC : COTES SOUMISES A UN SUIVI SPC - SPC CONTROL
- (PI) : POUR INFORMATION - FOR INFORMATION

LA COTATION EST EFFECTUEE SUIVANT L'EXIGENCE D'ENVELOPPE DIMENSIONING IS PERFORMED ACCORDING TO SURROUNDING REQUIREMENT ISO 8015:1985 (NF E 04-561 OCT.1991)

- ISO 1101 (NF E 04-552)
- ISO 2692:1988 (NF E 04-555 FEV.1992)
- ISO 5459 (NF E 04-554 DEC.1988)
- ISO 5458:1987 (NF E 04-559 FEV.1991)
- ISO 10578 (NF E 04-558 AOUT 1983)
- ISO 10579 (NF E 04-565 OCT.1986)
- ISO 3040:1990 PARTIELLE (NF E 04-557 DEC.1991)

**ATTENTION : LES COPIES NE SONT PAS GERES, SEUL LE FICHIER INFORMATIQUE FAIT FOI
CAUTION : THE COPIES ARE NOT MANAGED, ONLY THE COMPUTER FILE IS VALID**

12	15000M009	18/12/15	22018-G01-01	01	DJ
11	15000M005	12/07/15	22018-G01-01	01	JC
10	09000M002	21/09/09	22018-G01-01	01	JC
09	07000M003	16/04/07	22018-G01-01	01	ME
08	92001M011	12/03/97			SH
07	Traduction	03/10/96			SH
06	92001M010	11/07/96			SH
05	92001M009	03/07/96			SH
04	92001M008	10/04/96			SH
03	92001M007	16/02/96			SH
Draw Index	Modif.Nb	Date	Part name	Part index	Name
Project	This drawing is the property of SAVOY TECHNOLOGY and cannot be duplicated without its permission				

ALL FEATURES NOT DEFINED ON DRAWING MUST BE OBTAINED FROM MATH MODEL WITH [] APPLIED

General tol.
NFT5800 classe normale
ISO 2768-m

Wire range: See chart
Volume:
Weight:

CLIP SIKO 2
4.8 x 0.3/0.5/0.8

Scale: 8/1

20250 - K1 - 12

