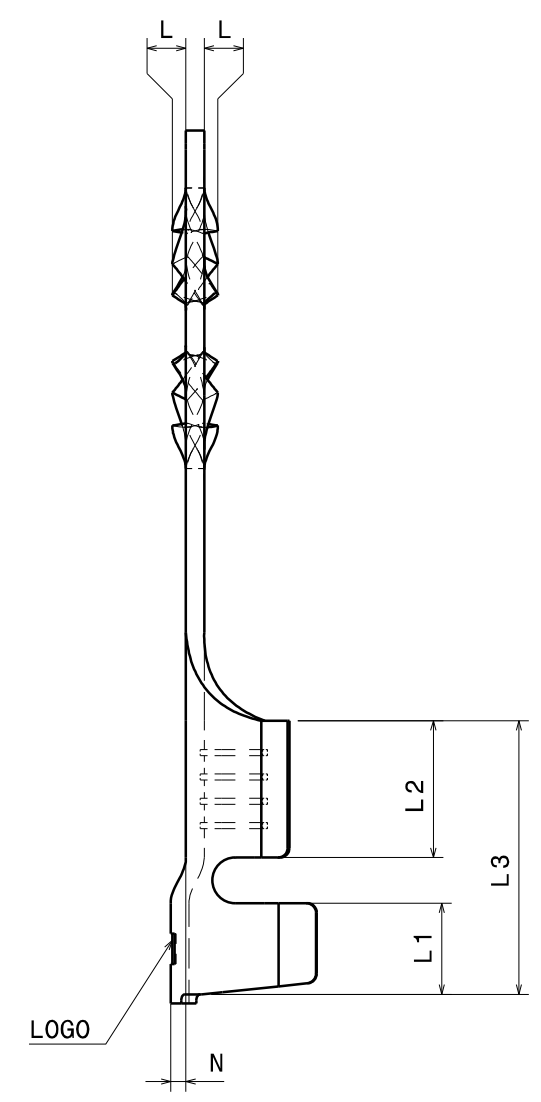
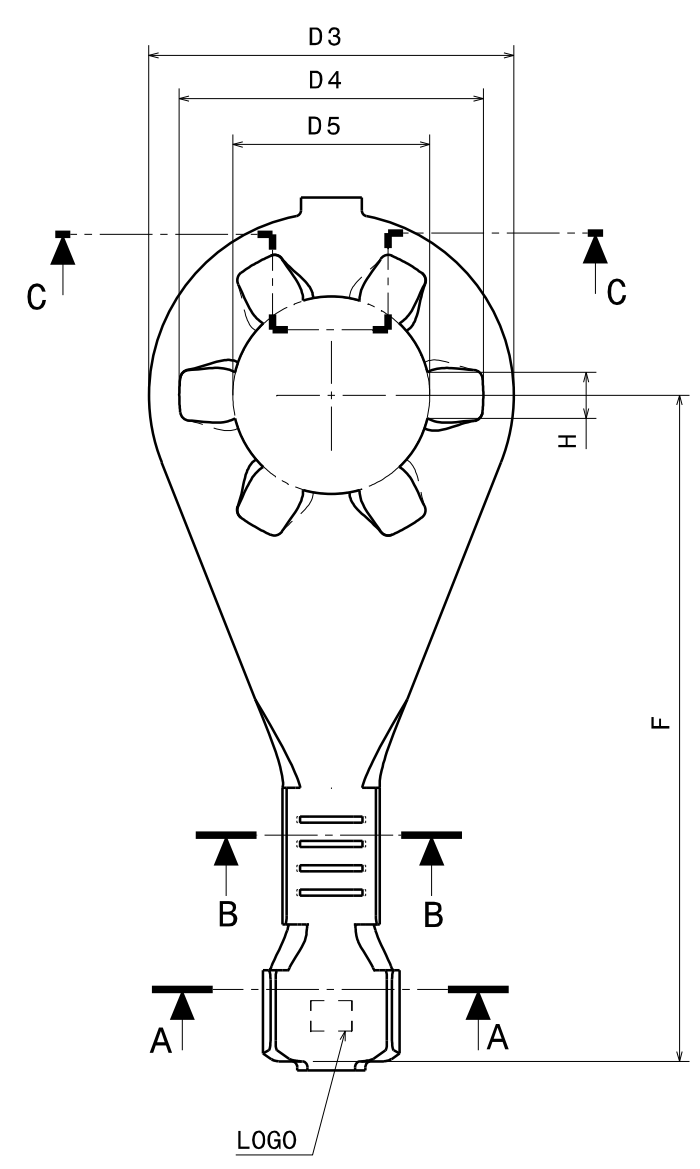
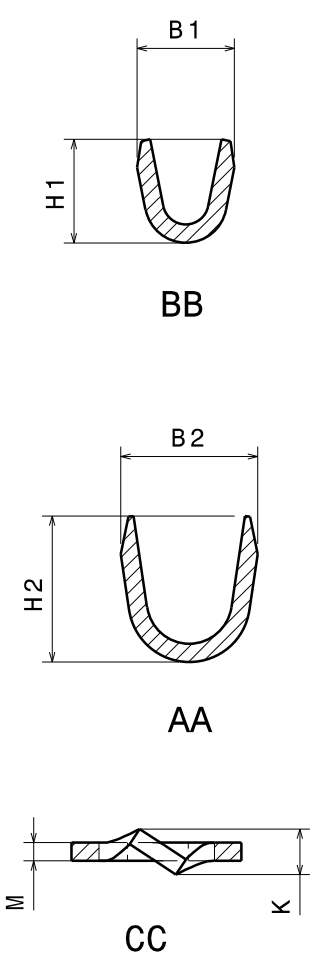
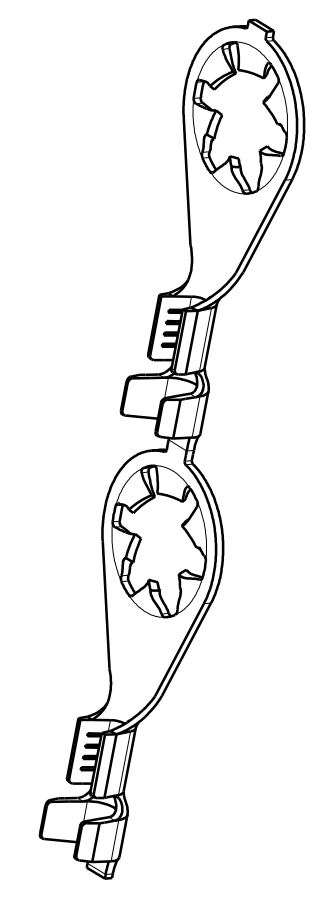


CONCEPTION ASSISTEE
PAR ORDINATEUR
CATIA
Version 5
CE PLAN NE DOIT SUBIR
AUCUNE MODIFICATION MANUELLE



VUE ISO ECHELLE 3:1
ISO VIEW SCALE 3:1



ECHELLE 1:1
SCALE 1:1

Material	Treatment	Material	Treatment
123	009	CuZn30	BRUT / RAW
161	009	CuNi12Zn24	BRUT / RAW
417	131	DC04	pré Ni 3μ
417	011	DC04	Ni 0.5μ + Sn 3μ
411	031	DC03	Post Ni 3μ
213	321	CuSn6	Blank + paper (rewinding)
214	326	CuSn6	Post Ni 0.5μ + Sn 5μ + paper (rewinding)
214	012	CuSn6	Ni 0.5μ + Sn 5μ

* : Dimensions valable uniquement pour pièces en acier
Dimensions available only for steel part

ARTICLE	SECTION	B1±0.2	H1±0.2	B2±0.2	H2±0.2	H2±0.2 *	D3	D4	D5	F	L1±0.2	L2±0.2	L3±0.3	K	L	M	N	H
25791	0.5-1 mm2	3.2	3.4	4.5	4.8		11.85±0.15	8	5.4±0.1	21.9±0.25	3	4.5	9	1.5 mini	0.45 mini	0.6	0.5 mini	1.4
25803	1.5-2.5 mm2	4	4.3	5.5	5.5	5.7	11.85±0.15	8	5.4±0.1	21.9±0.25	3	4.5	9	1.5 mini	0.45 mini	0.6	0.5 mini	1.4
22163	0.5-1.5 mm2	3.2	3.6	4.5	4.5		7.2±0.1		4.1±0.15	10.5±0.1	1.5	2.5	5		0.2 mini	0.5	/	1
22017	0.5-1 mm2	3.2	3.4	4.5	4.8		9.3±0.2	7.2	4.2±0.1	17.5 maxi	3	4.5	9	1.4±0.15	0.33 mini	0.6	0.5 mini	1
22049	0.5-1 mm2	3.2	3.4	4.5	4.8		9.3±0.2	7.2	4.0±0.1	17.5 maxi	3	4.5	9	1.4±0.15	0.33 mini	0.6	0.5 mini	1

(M) : COTE POUVANT ETRE MODIFIEE - DIMENSION COULD BE MODIFIED
 (Δ) : CARACTERISTIQUES FONCTIONNELLES - FUNCTIONNAL CHARACTERISTIC
 (Ind) : INDICE DE MODIFICATION - MODIFIED ITEM
 < > : NON CONFORMITE ACCEPTABLE. LA COTE D'ORIGINE EST SEULE VALABLE EN CAS DE RECLAMATION, DE REPARATION OU DE CONSTRUCTION D'OUTILLAGE. ACCEPTABLE NONCONFORMITY. ONLY THE ORIGINAL DIMENSION IS VALID IN CASE OF TOOL CONSTRUCTION, REPAIRING OR QUALITY COMPLAINT.
 Cm Cmk : COTES SOUMISES A CAPABILITE INITIALE - INITIAL CAPABILITY
 Cp Cpk : COTES SOUMISES A CAPABILITE EN PRODUCTION - PRODUCT CAPABILITY
 SPC : COTES SOUMISES A UN SUIVI SPC - SPC CONTROL
 (PI) : POUR INFORMATION - FOR INFORMATION

LA COTATION EST EFFECTUEE SUIVANT L'EXIGENCE D'ENVELOPPE DIMENSIONING IS PERFORMED ACCORDING TO SURROUNDING REQUIREMENT ISO 8015:1985 (NF E 04-561 OCT.1991)

ISO 1101 (NF E 04-552)
 ISO 2692:1988 (NF E 04-555 FEV.1992)
 ISO 5459 (NF E 04-554 DEC.1988)
 ISO 5458:1987 (NF E 04-559 FEV.1991)
 ISO 10578 (NF E 04-558 AOUT 1983)
 ISO 10579 (NF E 04-565 OCT.1986)
 ISO 3040:1990 PARTIELLE (NF E 04-557 DEC.1991)

ATTENTION : LES COPIES NE SONT PAS GERES, SEUL LE FICHER INFORMATIQUE FAIT FOI
CAUTION : THE COPIES ARE NOT MANAGED, ONLY THE COMPUTER FILE IS VALID

ALL FEATURES NOT DEFINED ON DRAWING MUST BE OBTAINED FROM MATH MODEL WITH APPLIED
 General tol. NPT5800 classe normale ISO 2768-m
 Wire range:
 Volume: See chart
 Weight: See chart



COSSE FREIN
RING TERMINAL
Scale: 6/1

Draw Index	Modif.Nb	Date	Part name	Part index	Name	Verif
01	12000M013	20/07/12	70025-01-GEN	01	DJ	
Project 70025						

70025 - K1 - 01

