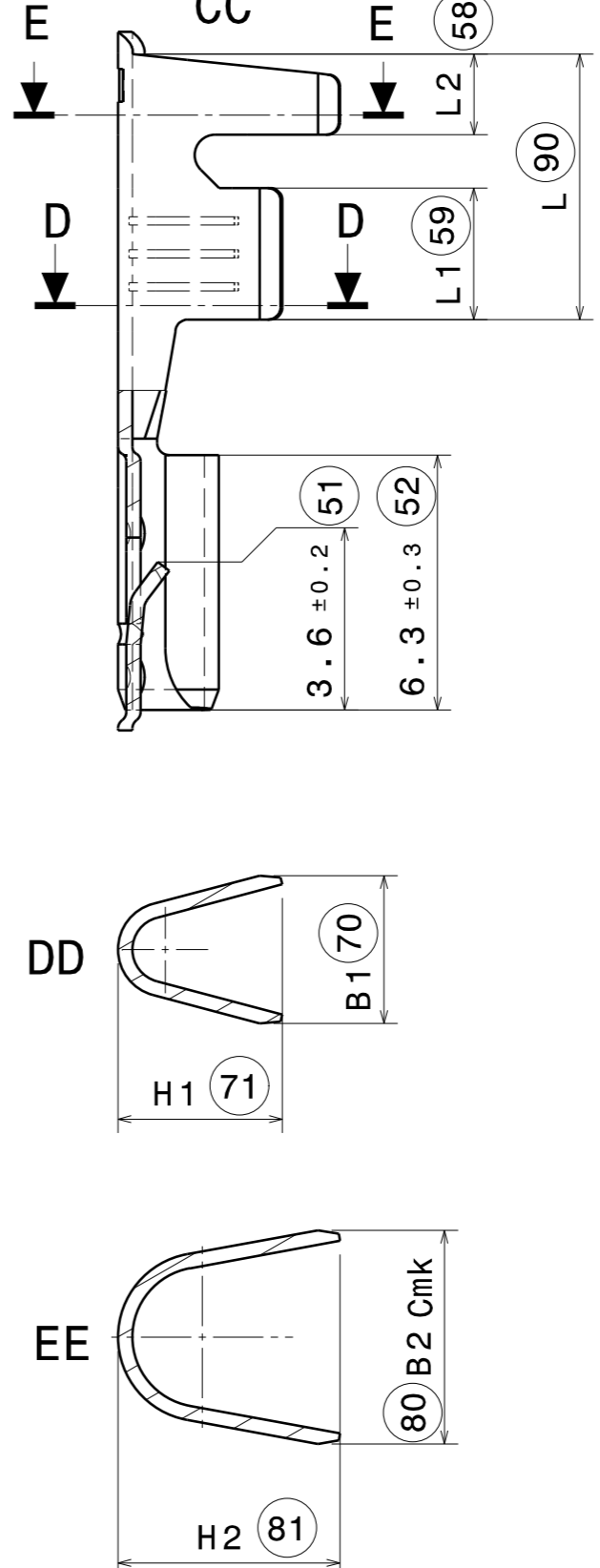
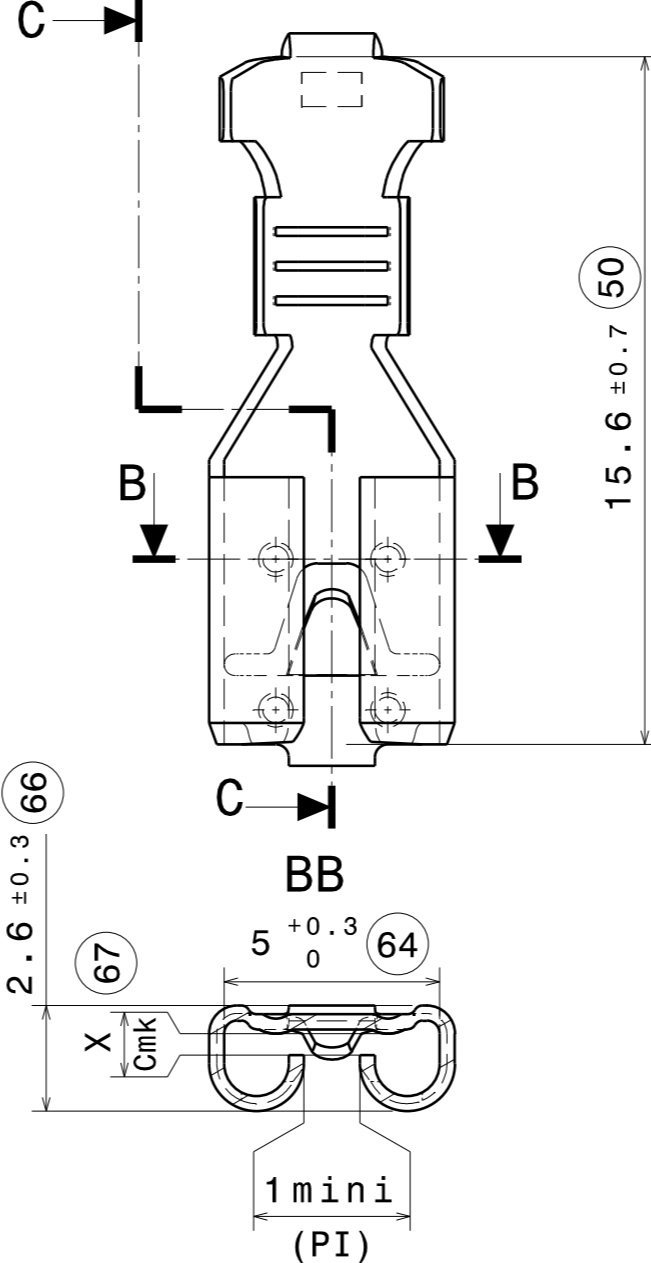
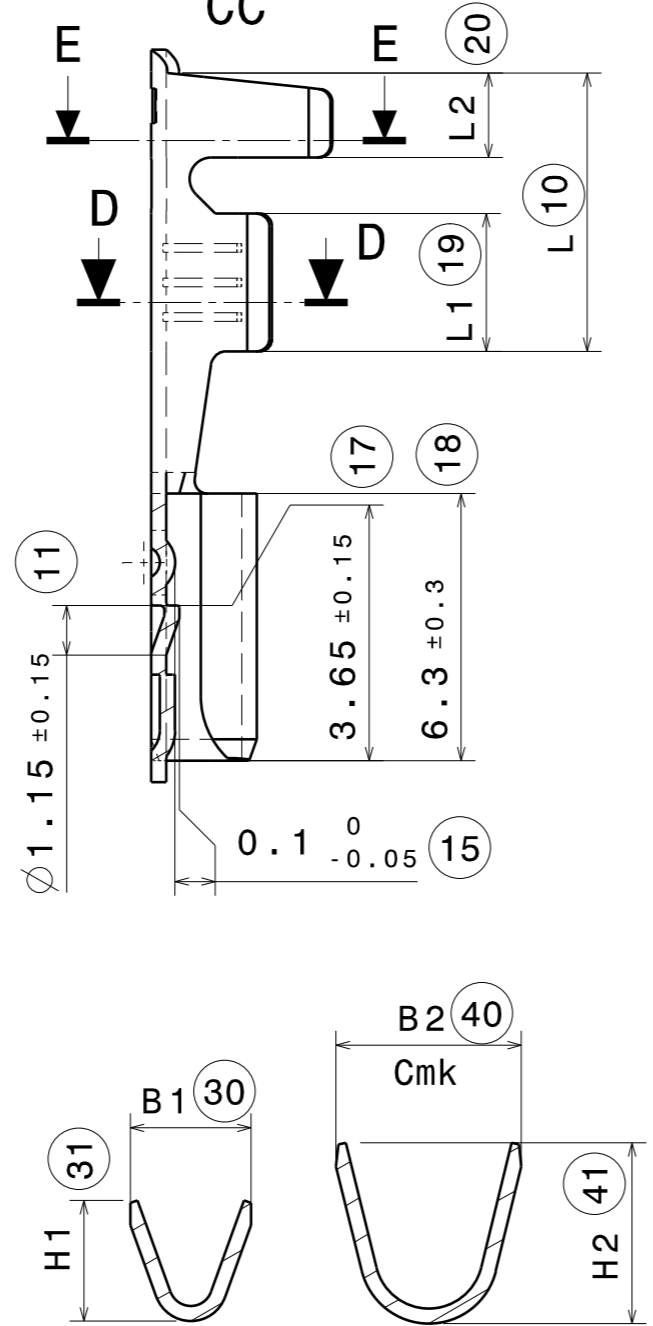
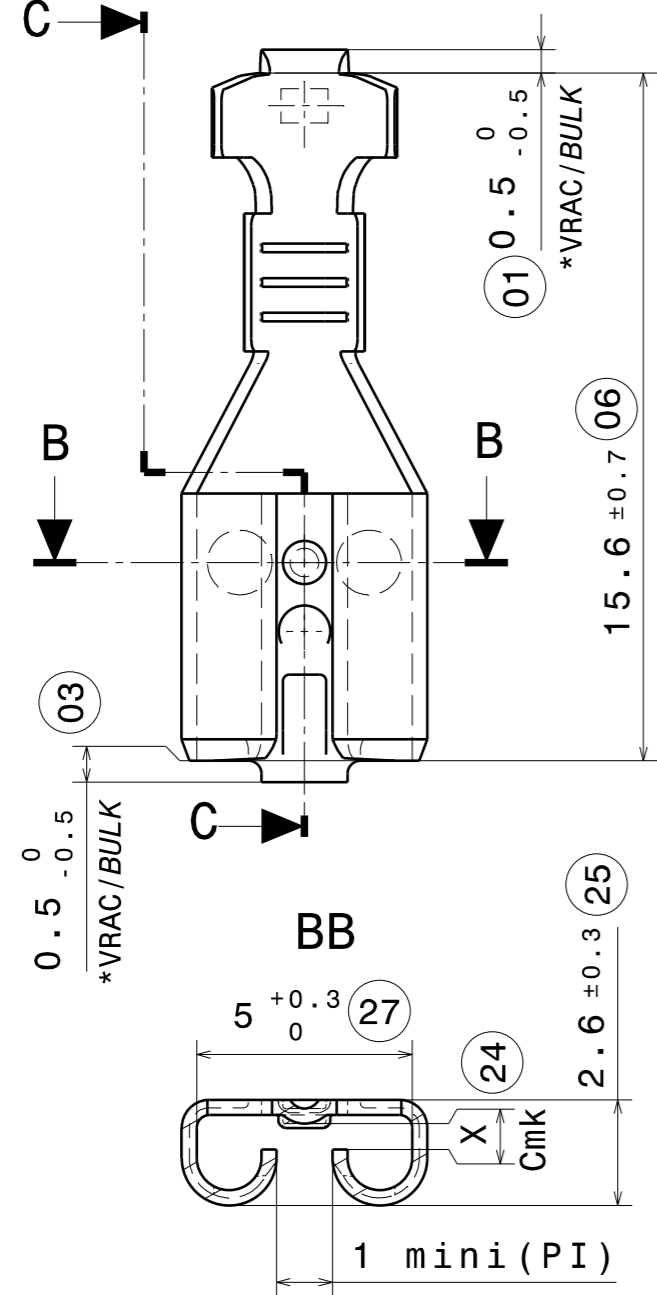
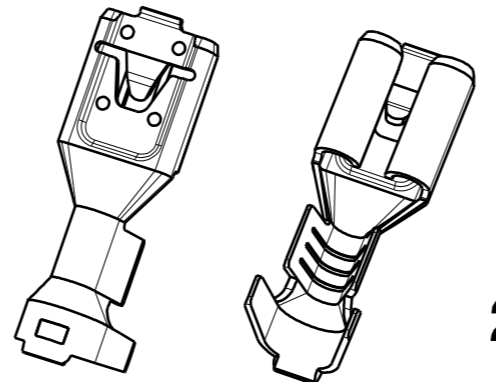
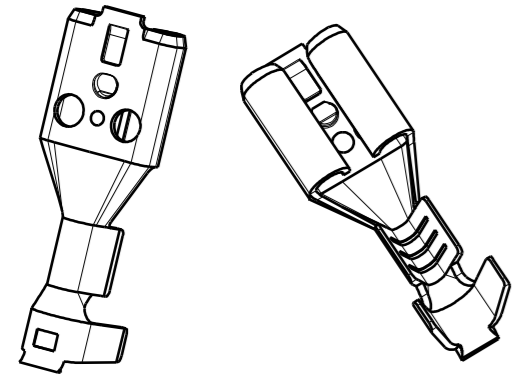
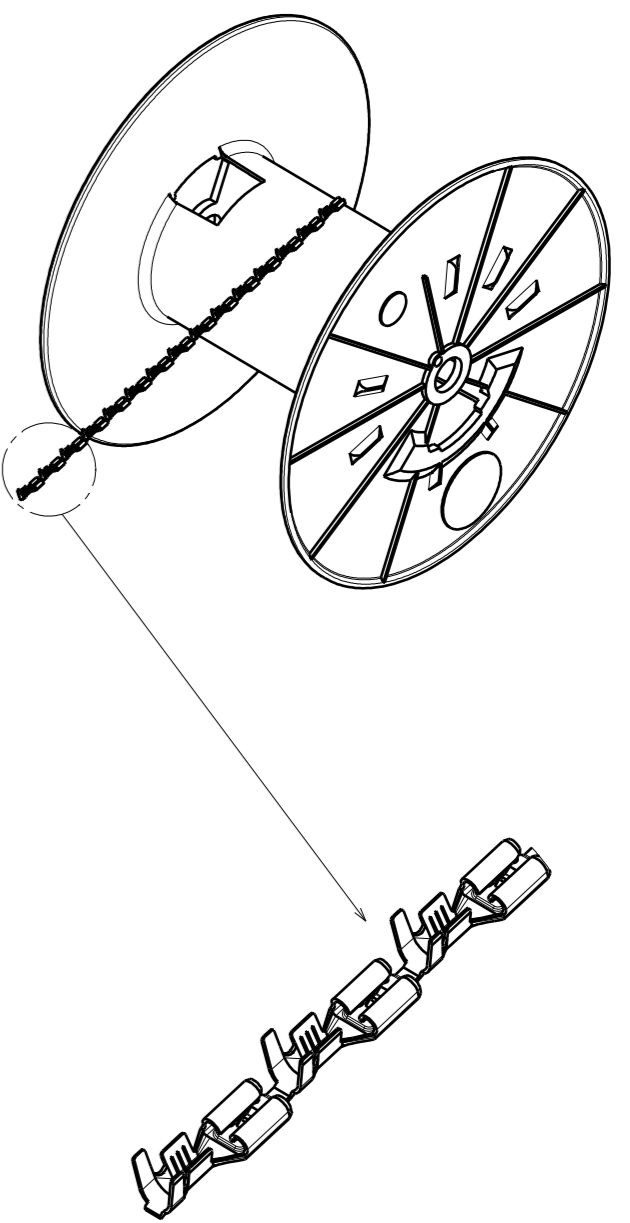


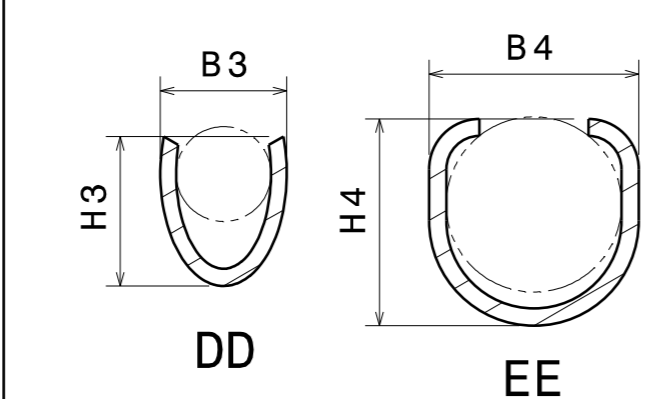
CONCEPTION ASSISTEE
PAR ORDINATEUR
CATIA
Version 5
CE PLAN NE DOIT SUBIR
AUCUNE MODIFICATION MANUELLE



DEROULEMENT SE01
UNWIDING



22066, 22067, 22273,
25312, 25313, 25314,
25315



45312, 45313, 45314, 45315

25891

Material code	Treatment code	Material	Treatment
123	009	CuZn30	BRUT/BLANK
123	204	CuZn30	BRUT/RECUIT RAW/ANNEALED
123	211	CuZn30	POST Sn3μ RECUIT/ANNEALED
123	330	CuZn30	POST Sn1μ RECUIT+POSE PAPIER POST Sn1μ ANNEALED+PAPER LAYING
213	011	CuSn6	POST Sn3μ
213	042	CuSn6	POST Ag3μ

BANDE / BAND	VRAC / BULK	SECTION	ACCORDING TO DIN 46247	B1±0.5	H1±0.5	B2±0.5	H2±0.5	B3±0.5	H3±0.5	B4±0.5	H4±0.5	L1±0.4	L2±0.4	L±0.7	X	EP	PAS
22066		0.5/1 mm2		2.8	2.8	4.3	4.2					3.2	2	6.5	0.42±0.05	0.35	18
22067		0.5/1 mm2		2.8	2.8	4.3	4.2					3.2	2	6.5	0.65±0.05	0.35	18
22273		1.5/2.5 mm2		3.6	4	5.7	4.8					3.2	2	6.5	0.6±0.1	0.35	18
25312	05312	1.5/2.5 mm2	X	3.8	4	5.2	5.2					3.2	2	6.5	0.55±0.1	0.35	18
25313	45312	1.5/2.5 mm2	X					3.4	3.6	5.2	4.4	3.2	2	6.5	0.55±0.1	0.35	18
25314	05313	0.5/1 mm2	X	3	3	4.5	4.5					3.2	2	6.5	0.55±0.1	0.35	18
25314	45313	0.5/1 mm2	X					2.5	2.7	4.2	3.7	3.2	2	6.5	0.55±0.1	0.35	18
25314	05314	0.5/1 mm2	X	3	3	4.5	4.5					3.2	2	6.5	0.4±0.05	0.35	18
25314	45314	0.5/1 mm2	X					2.5	2.7	4.2	3.7	3.2	2	6.5	0.4±0.05	0.35	18
25315	05315	1.5/2.5 mm2	X	3.8	4	5.2	5.2					3.2	2	6.5	0.4±0.05	0.35	18
25315	45315	1.5/2.5 mm2	X					3.4	3.6	5.2	4.4	3.2	2	6.5	0.4±0.05	0.35	18
25891		1.5/2.5 mm2		3.8	4	5.2	5.2					3.2	2	6.5	0.4±0.05	0.35	18

(M) : COTE POUVANT ETRE MODIFIEE - DIMENSION COULD BE MODIFIED
 △ : CARACTERISTIQUES FONCTIONNELLES - FUNCTIONAL CHARACTERISTIC
 Ind. : INDICE DE MODIFICATION - MODIFIED ITEM
 < > : NON CONFORMITE ACCEPTABLE. LA COTE D'ORIGINE EST SEULE VALABLE EN CAS DE RECLAMATION, DE REPARATION OU DE CONSTRUCTION D'OUTILLAGE. ACCEPTABLE NONCONFORMITY. ONLY THE ORIGINAL DIMENSION IS VALID IN CASE OF TOOL CONSTRUCTION, REPAIRING OR QUALITY COMPLAINT.
 Cm Cmk : COTES SOUMISES A CAPABILITE INITIALE - INITIAL CAPABILITY
 Cp Cpk : COTES SOUMISES A CAPABILITE EN PRODUCTION - PRODUCT CAPABILITY
 SPC : COTES SOUMISES A UN SUIVI SPC - SPC CONTROL
 (PI) : POUR INFORMATION - FOR INFORMATION

LA COTATION EST EFFECTUEE SUIVANT L'EXIGENCE D'ENVELOPPE DIMENSIONING IS PERFORMED ACCORDING TO SURROUNDING REQUIREMENT ISO 8015:1985 (NF E 04-561 OCT.1991)

ISO 1101 (NF E 04-552)
 ISO 2692:1988 (NF E 04-555 FEV.1992)
 ISO 5459 (NF E 04-554 DEC.1988)
 ISO 5458:1987 (NF E 04-559 FEV.1991)
 ISO 10578 (NF E 04-558 AOUT 1983)
 ISO 10579 (NF E 04-565 OCT.1986)
 ISO 3040:1990 PARTIELLE
 (NF E 04-557 DEC.1991)

ATTENTION : LES COPIES NE SONT PAS GERES, SEUL LE FICHER INFORMATIQUE FAIT FOI
 CAUTION : THE COPIES ARE NOT MANAGED, ONLY THE COMPUTER FILE IS VALID

Draw Index	Modif.Nb	Date	Part name	Part index	Name	Verif
03	1400M001	30/07/14	70028-K1-01	01	DJ	
02	1200M029	04/12/12	70028-K1-01	01	DJ	JS
01	1200M023	08/11/12	70028-K1-01	01	DJ	JS

ALL FEATURES NOT DEFINED ON DRAWING MUST BE OBTAINED FROM MATH MODEL WITH [] APPLIED
 General tol.
 NFT5800 classe normale
 ISO 2768-m
 Wire range:
 Volume: See chart
 Weight: See chart



CLIP 4.8
 RECEPTACLE 4.8
 Scale: X/1
 70028 - K1 - 03

